

Govt. P.G. College Una H.P.

Alumni Feedback

Session 2021-22



ALUMNI FEEDBACK ANALYSIS & REPORT IQAC

Govt. P.G. College Una

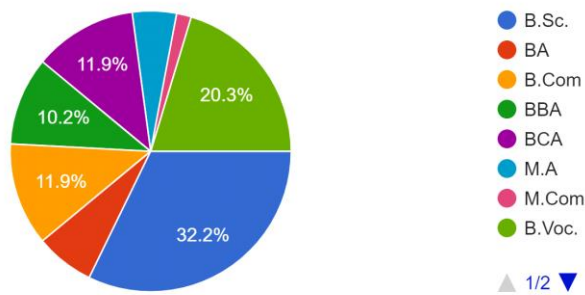
District Una HP-174303

www.govtcollegeuna.in | gcuna-hp@nic.in | gpgcuna68@gmail.com

ALUMNI FEEDBACK ANALYSIS 2021-22

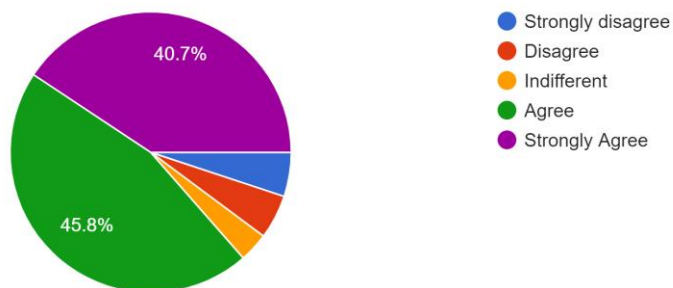
1.

Degree/Program completed from the college
59 responses



2.

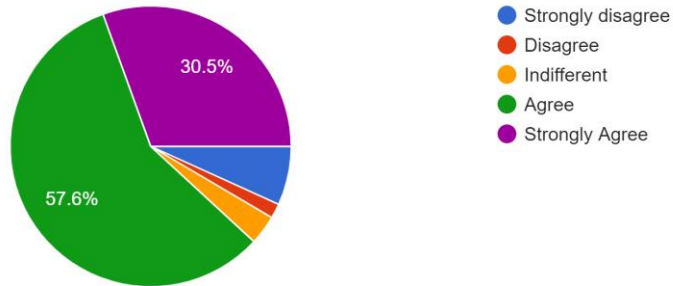
I feel proud to be associated with Govt. P. G. College Una
59 responses



3.

I feel that the college taught me some valuable lessons in character building

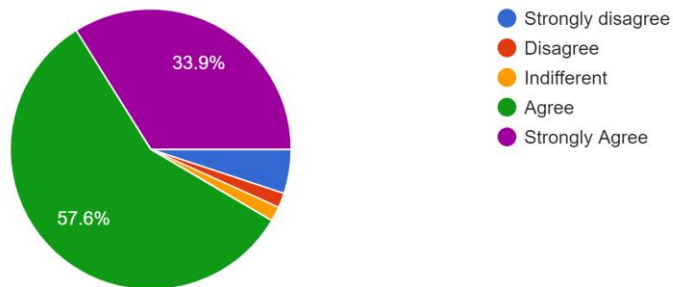
59 responses



4.

The college played an important role in increasing my level of confidence

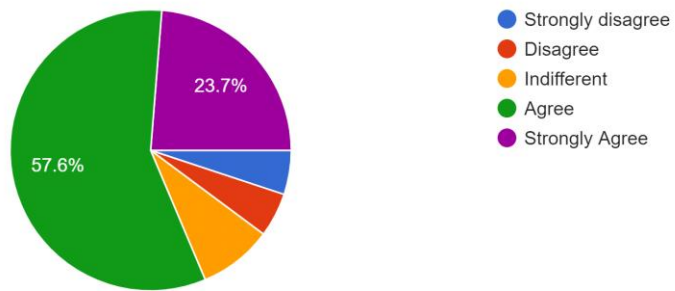
59 responses



5.

The extra-curricular activities gave me an opportunity to develop my personality

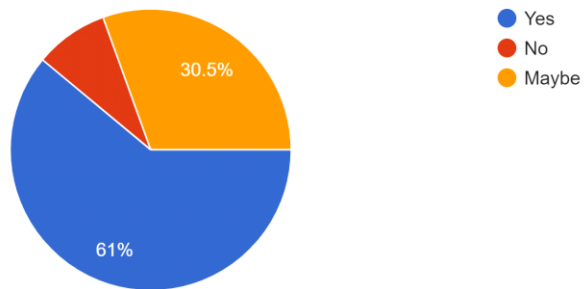
59 responses



6.

Would you like to help the institute in initiating corporate relations for conducting placement drives, talks, seminar etc.

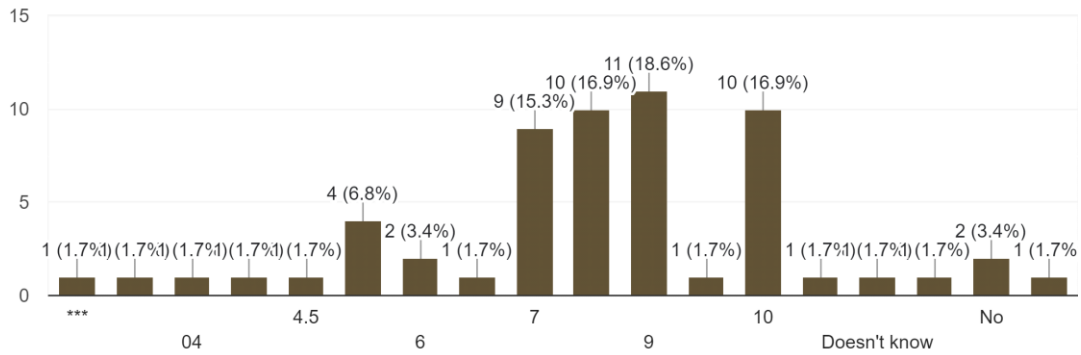
59 responses



7.

Give your rating to this college on a scale of 10 for infrastructure Facilities

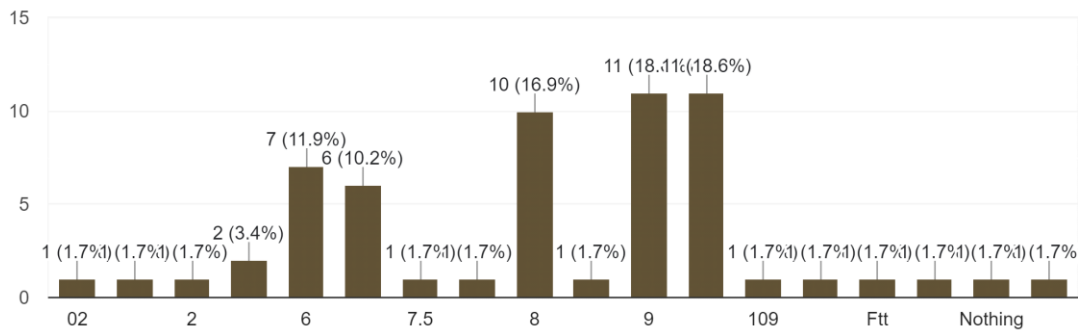
59 responses



8.

Give your rating to this college on a scale of 10 for Academic Facilities

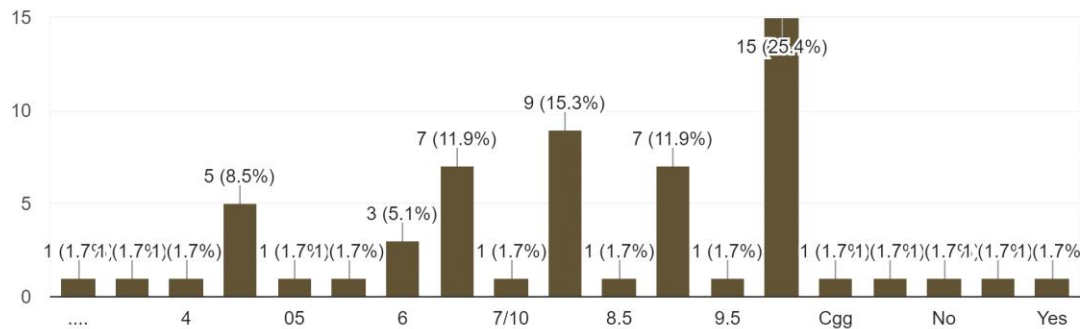
59 responses



9.

Give your rating to this college on a scale of 10 for sports and cultural Facilities

59 responses



Alumni feedback report

This survey is designed to take feedback of passed out students based on their experience in the college. The data collected is used to improve our work culture by knowing strengths and weaknesses of the institution. This survey contains feedback related to following areas:

1. Degree/Programme completed from the college.
2. I feel proud to be associated with Govt. P. G. College Una
3. I feel that the college taught me some valuable lessons in character building
4. The college played an important role in increasing my level of confidence
5. The extra-curricular activities gave me an opportunity to develop my personality
6. Would you like to help the institute in initiating corporate relations for conducting placement drives, talks, seminar etc.
7. Give your suggestions to improve the relationship between the alumni and the College
8. Give your rating to this college on a scale of 10 for infrastructure Facilities
9. Give your rating to this college on a scale of 10 for Academic Facilities


10. Give your rating to this college on a scale of 10 for sports and cultural Facilities
11. Kindly do a SWOT Analysis of the institution pointing out strengths, weaknesses, opportunities and threats.

This survey is conducted electronically using google forms by sharing links through social media. Results are based on feedback provided by interested individuals.

Component	Analysis
1	The graph of this question shows the degree or programme of the respondents. Here we see that maximum responses are from science graduates i.e., 32.2 % followed by B.Voc. students i.e., 20.3%
2	Second graph shows that a whopping majority of the alumni i.e., 86.5% feel proud to be associated with the college.
3	Third, 88.1% feel that they have learnt valuable lesson in character building.
4	A large majority (57.6+33.9=91.5%) feels that college played an important role in increasing their level of confidence.
5	(57.6+23.7=81.3%) of the alumni feels that extra-curricular activities gave them an opportunity to develop their personality.
6	61 % of the alumni are ready to help the institute in initiating corporate relations for conducting placement drives, talks, seminar etc.
7	(15.3+16.9+18.6+16.9=67.7%) gave a rating ranging from 7-10 for infrastructure Facilities on a scale of 10.
8	(10.2+ 16.9+ 18.11+ 18.6=63.81%) gave a rating ranging from

	7-10 for Academic Facilities on a scale of 10.			
9	(11.9 +11.9+ 15.3+ 25.4=64.5%) gave a rating ranging from 7-10 to this college on a scale of 10 for sports and cultural Facilities			
10	Strength	Weakness	Opportunities	Threats
	Great environment	Dirty restrooms	It can be a regional center or cluster university	Students fights
	Vast land	Unhygienic washrooms		Absenteeism of students
	Amazing teachers	Overburdened teachers		
	Excellent staff	Lack of girl's hostel		
	Large number of students	Poor management		

As per SWOT analysis the college can grow into a cluster university or regional centre by improving status of cleanliness, overburdened teachers, providing hostel facility to girls and proper management.


Principal
Govt. College, Una
(H.P.) Pin-174303